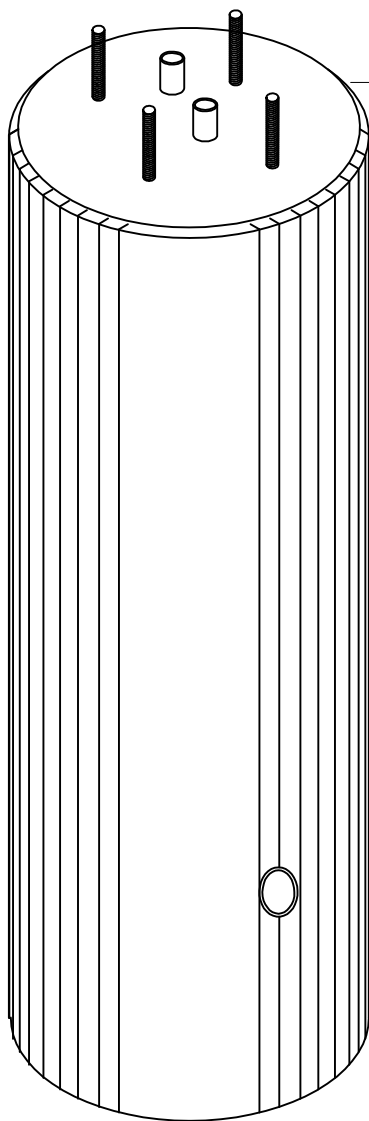
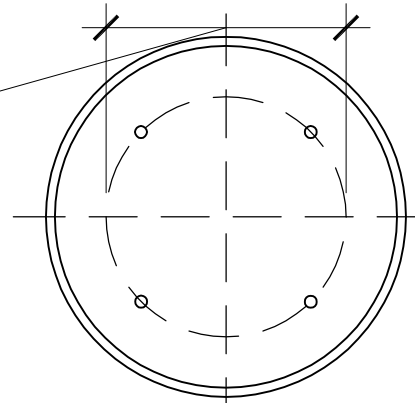


|                          |             |      |          |
|--------------------------|-------------|------|----------|
| WORK ORDER#              | DESCRIPTION | DATE | APPROVED |
| <b>30" DIA POLE BASE</b> |             |      |          |



BOLT CIRCLE DIA.  
PER ENGINEER



BOLT PROJECTION  
PER ENGINEER

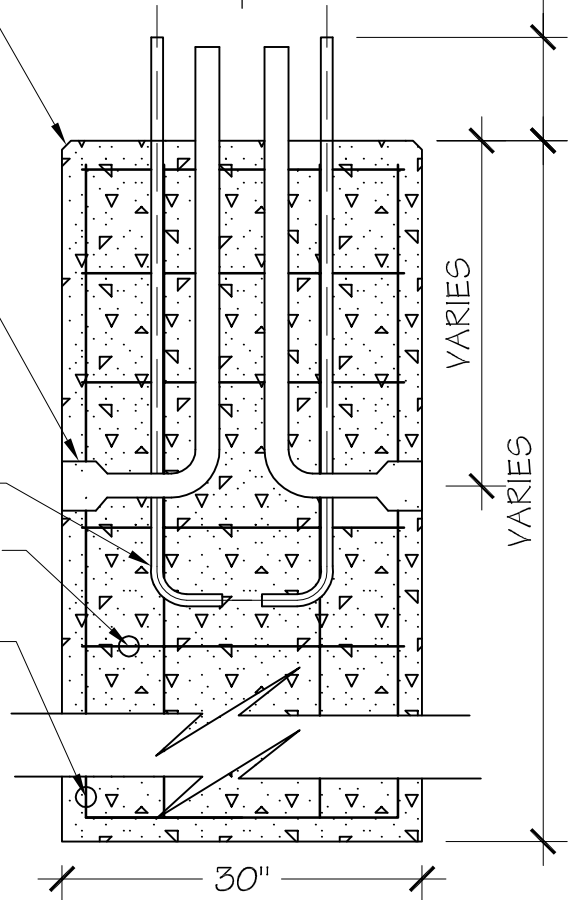
$\frac{3}{4}$ " CHAMFER

PVC CONDUIT  
CAST IN  
PLACE, AS  
REQUIRED

ANCHOR BOLTS  
SPECIFIED BY  
POLE MANUF.

#3 @ 12 C/C"

#7 @ 8"



VARIABLES

VARIABLES

SPECS:  
 CONCRETE = 5,000 PSI @ 28 DAYS  
 REINFORCING = PER ENGINEER  
 WEIGHT/LINEAR FT = 707 LBS.

**CEI**  
 Concrete Experts, Inc.  
 561-714-8100  
 3690 Consumer Street  
 Riviera Beach, FL. 33404

- NOTES:  
 1.0 DESIGNED TO SUPPORT METAL LIGHT POLE ENGINEER TO SPECIFY POLE  
 2.0 ENGINEER TO SPECIFY BOLT CIRCLE AND PROJECTION  
 3.0 CONDUIT CAST IN BASE AS REQUIRED

|                       |         |     |
|-----------------------|---------|-----|
| SIZE                  | DWG NO. | REV |
| SCALE $\frac{3}{4}$ " | SHEET   |     |